

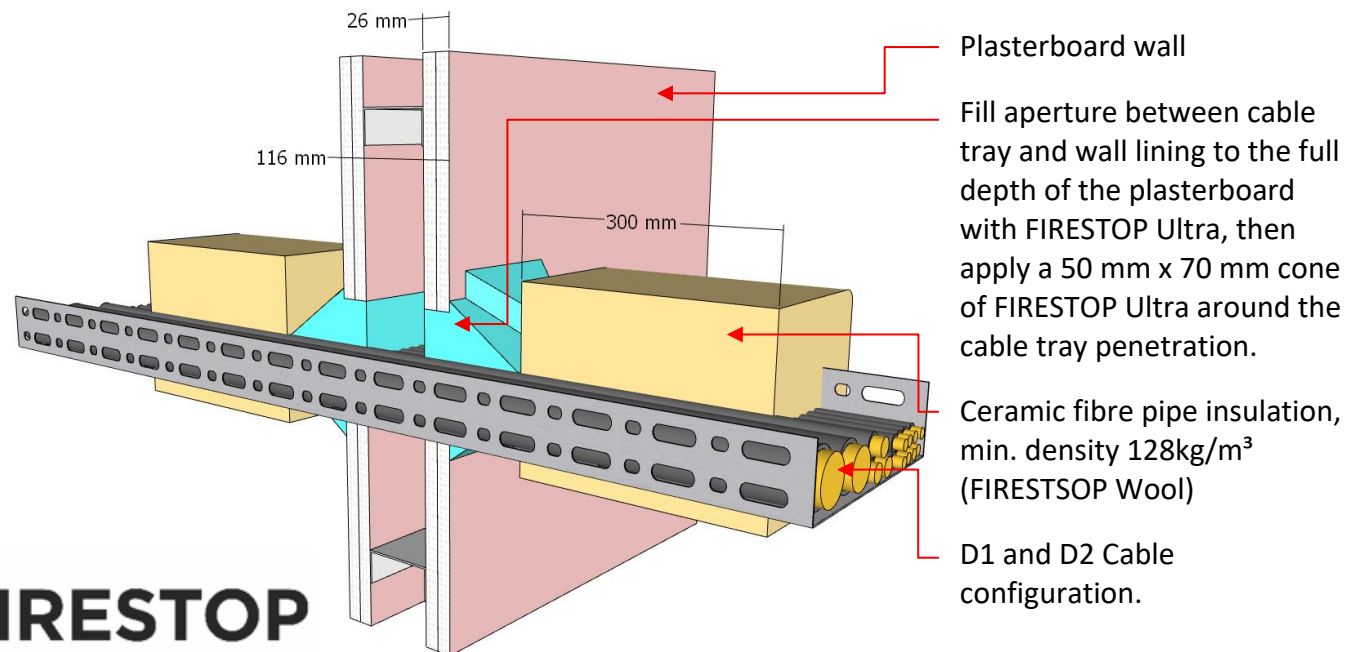


**Firestop
Centre**
Innovative Firestop Solutions

System FC521

Penetration Detail: Electric Cable Tray (D1 and D2 configuration) fire-stopped with FIRESTOP Ultra Sealant

Separating Element: Min. 116mm thick 2 x 13mm FR Plasterboard or Concrete Wall



Installation Instructions:

1. Clean all surfaces - remove grease and dust.
2. Fill gap between cables/tray and wall with FIRESTOP Ultra to 26 mm depth.
3. Apply a 50mm x 70mm cone of FIRESTOP Ultra around the cable tray, extending 50mm onto the separating element and 70mm onto the cables/tray.
4. Wrap tray with 50mm ceramic fibre (2 x 25 mm, 150 mm overlap), extending 300 mm each side of wall. Secure with steel ties 100 mm from ends.

Services & Ratings (FRR)

Service Penetration	Tray Size	Aperture Size	Annular Gaps	FRR
D1 cable tray	325 x 50mm	331 x 64mm	1-63mm	-/120/120
D1 cable tray	170 x 50mm	179 x 128mm	5-20mm	-/120/120

- **FIRESTOP Ultra** is suitable for both interior and exterior applications - refer to the *FIRESTOP Ultra UV-Adhesion Report* for details.

Compliance

Report Fire TS Lab Report
RIR2207601

Pages 4, 12 & 13

Standards AS1530.4-2014 &
AS4072.1-2005

Firestop Centre Technical support:
Tel: +64 9 483 4000
info@firestopcentre.co.nz
www.firestopcentre.co.nz

Drawing Rev: 1.0

Scale: NTS

Disclaimer: Firestop Centre may change product specifications without notice as part of our ongoing development and testing. All information in this document is provided in good faith and for guidance only. All drawings are for illustration purposes only and may not reflect the actual product. Since we cannot control how the product is installed or the conditions on-site, we do not guarantee the product's performance. We also accept no responsibility for any loss, damage, or injury resulting from the use of this information.